

Customer :

customer

Customer part :

customer part

Comment :

Comment

S1=2.22

S2=2.95

Tmax=456

Tp S2=495.0

PI=0.43

HI=117

Sample =1641.60

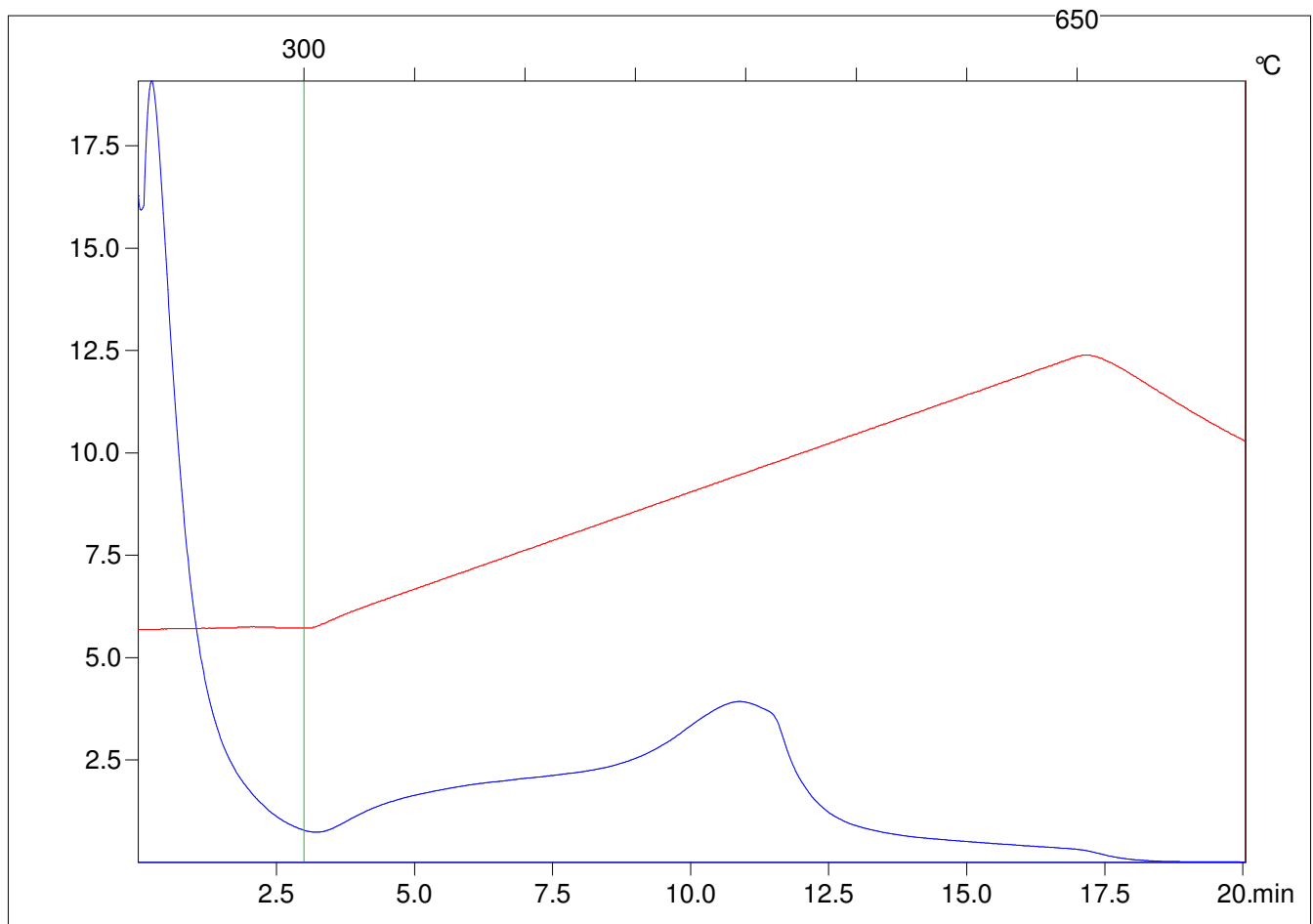
Method =Bulk Rock

Cycle=Basic

KFID(10\*9)=1444

Qty =70.6

TOC=2.53



C:\VINCI\PK1792\PK046.R00 : FID pyrolysis graphic

State

Pyro Status

Oxi Status